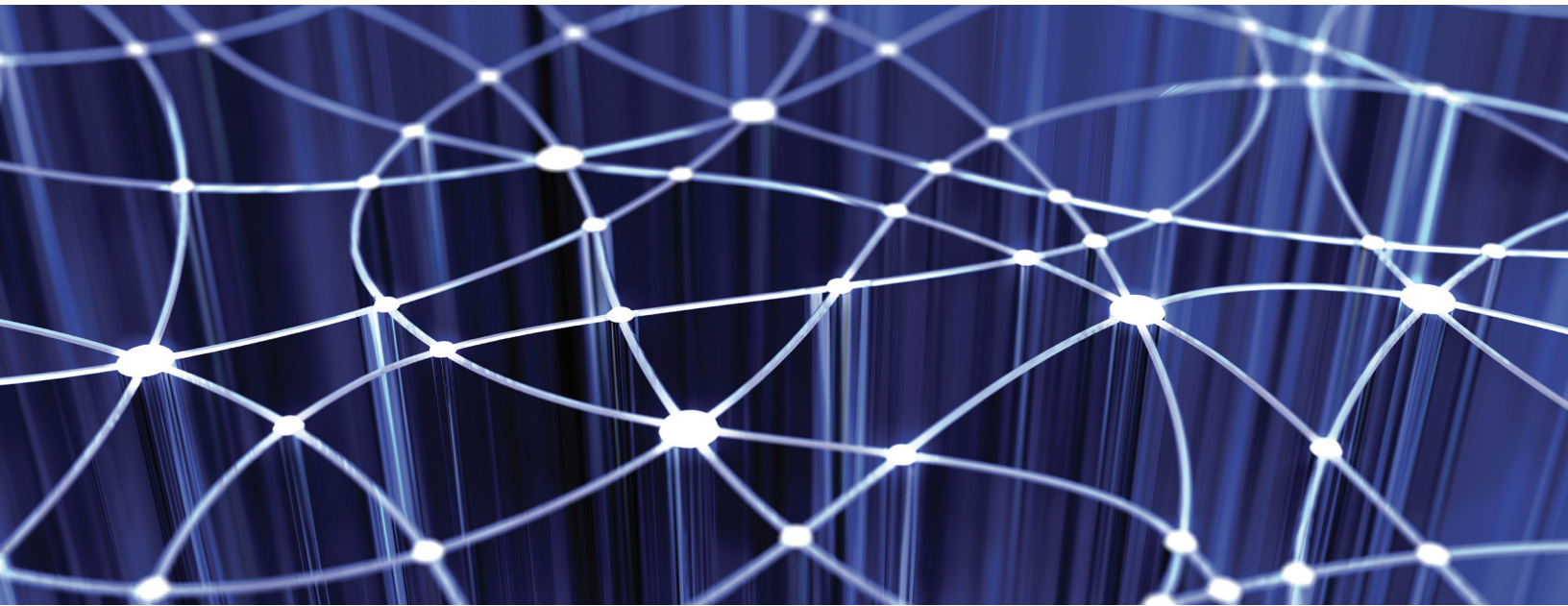


Emergency Preparedness Service Plans for Critical Communications

Cost-effective and Flexible Emergency Preparedness Services Keep Communications Running in Any Situation with Broadband Satellite



Emergency preparedness just got a lot more affordable.

Organizations recognize the importance of emergency communications planning in order to avoid the risks of outages, including safety, lost productivity, lost revenue and liability. However, the high costs of emergency preparedness can be prohibitive. Spacenet is here to help your organization access cost-effective emergency communications.

Now, with Spacenet's Emergency Preparedness Plan, your organization has access to an affordable and flexible emergency communications solution that provides readily available communications via satellite to virtually any U.S. location. By purchasing a cost-effective pre-paid business continuity service plan (at a fraction of the cost of a full-time service), your organization has access to guaranteed services and equipment when you need it, even when local network services are down! Think of it as an insurance plan for your critical communications.

Benefits include:

- › Prepaid emergency communications service with low annual fee (you have the option to extend service month-to-month or longer duration following deployment at a given site)
- › Guaranteed service availability with expedited on-site professional installation
- › No need to store and maintain the VSAT equipment – it is kept in Spacenet's warehouse until you choose to deploy to a site
- › 24 x 7 help desk for rapid deployment and activation – avoid administrative delays
- › Support for fully converged data, voice and video applications

Satellite is an ideal option for high-speed always-on broadband connectivity that can be quickly deployed in virtually any location and for any size organization. It is a proven critical component of emergency management planning and provides a quick deploy, flexible and re-useable network solution to enable both short and long-term deployments.

Spacenet offers reliable satellite communications services to protect your network infrastructure in the case of an emergency. Our satellite solutions offer unique advantages including:

- › A physically diverse network path
- › Seamless failover connectivity
- › Available in transportable solutions for rapid deployment anywhere
- › Supports a variety of applications over IP, including VoIP based networks

Does your organization have a plan to protect its critical communications infrastructure in the case of an emergency?

How will your business stay connected if terrestrial lines are down?

What is the cost of network downtime to your organization?

Find out how to protect your critical communications with satellite.
Call Toll Free 1-866-480-2263 or email spacenetinfo@spacenet.com.



Emergency Preparedness Service Plans for Critical Communications

Cost-effective and Flexible Emergency Preparedness Services Keep Communications Running in Any Situation with Broadband Satellite

Plan Details

OVERVIEW

Prepaid plan that ensures guaranteed service and equipment for emergency satellite communications. Initial prepayment includes indoor and outdoor equipment, professional installation, shipping in the Continental US, first year's annual reservation fee, two months of satellite broadband service, and IPSEC/VPN backhaul services. Standard service begins following deployment to a site, and customer then has option to continue the service on a month-to-month basis or execute a new long-term contract for that site.

SERVICE

2 months of prepaid data and backhaul service that can be deployed at any time during the 12 month contract term (2 months of service begins with deployment to a given site)

Optional voice service includes up to 6 lines per site, E911 and prepaid annual line maintenance.

Satellite service/speed options include:

- Spacenet Broadband S2-1000 (1,024 kbps / 256 kbps)
- Spacenet Performance S2-1500 (1.5 Mbps / 512 kbps)
- Spacenet Performance S2-4000 (3 Mbps / 1 Mbps)

EQUIPMENT

Equipment is pre-purchased by customer and stored in Spacenet's warehouse until deployment

Based on Spacenet's SkyEdge II VSAT platform

Fixed and transportable antenna options available (1.2M)

Outdoor unit electronics

Optional Analog telephone Adapter (ATA) for VoIP/Fax support

SUPPORT/ CUSTOMER SERVICE

24x7 X 365 toll-free help desk for deployment and service activation

INSTALLATION/ DEPLOYMENT

Rapid deployment by Spacenet within 72 hours after a request*. Prioritized field services installation.

* Subject to restrictions – see Spacenet service agreement for details